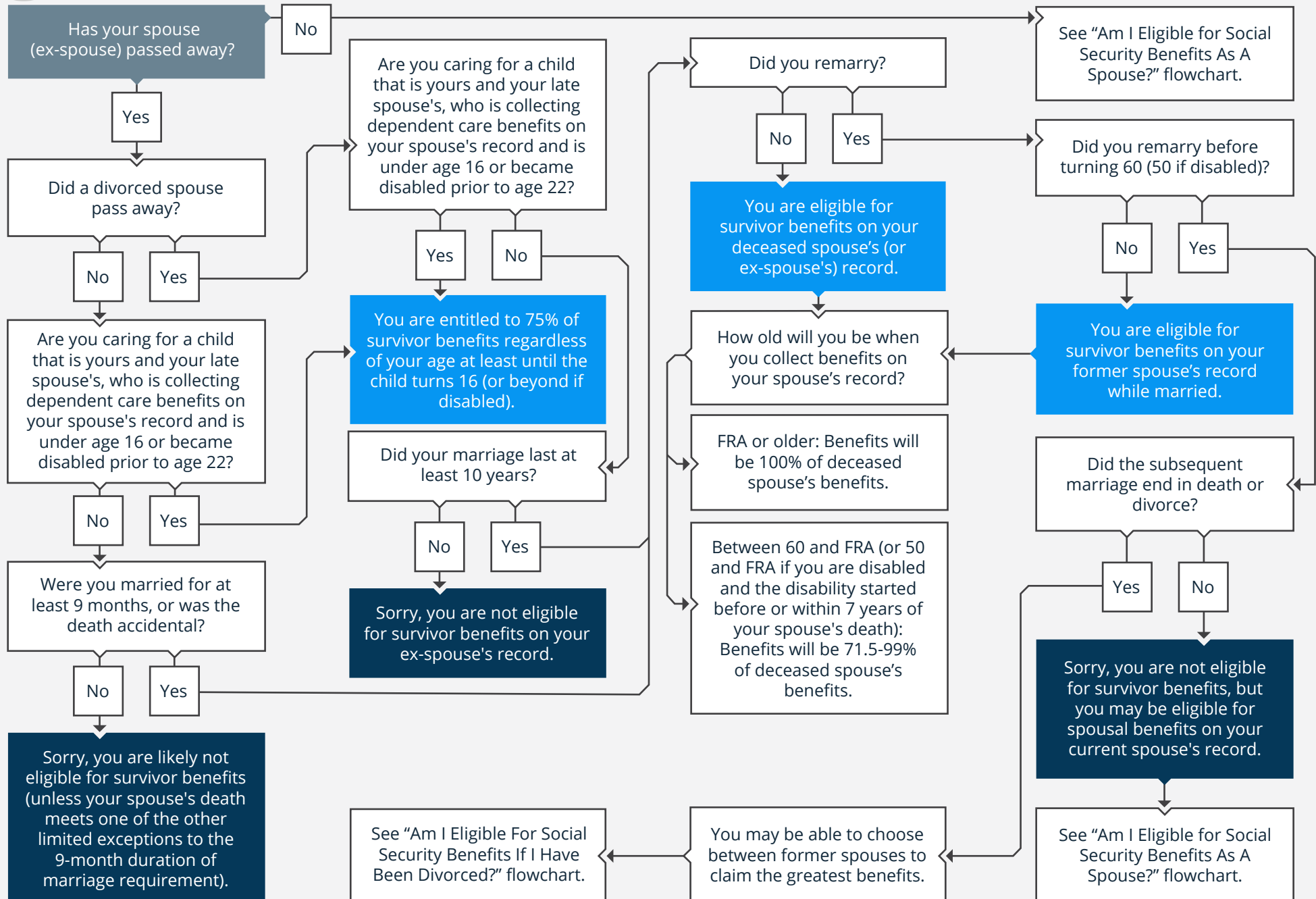


2023 · AM I ELIGIBLE FOR SOCIAL SECURITY BENEFITS AS A SURVIVING SPOUSE?



Start Here





Beden Wealth Management

1593 Spring Hill Road, Suite 500E, Vienna, Virginia 22182

cjbeden@bedenwealth.com | 703-356-9522 | www.bedenwealth.com

For educational purposes only and should not be construed as legal, tax or accounting advice. Clients should confer with their qualified legal, tax and accounting advisors as appropriate. Craig Beden is a registered representative of and offers securities and investment advisory services through MML Investors Services, LLC. Member SIPC. Beden Wealth Management is not a subsidiary or affiliate of MML Investors Services, LLC, or its affiliated companies. 1593 Spring Hill Road, Vienna, VA 22182. (703) 356-9522. fpPathfinder is not affiliated with MML Investors Services LLC. Domiciled in VA, CA Insurance License #0C98746.

